

Oracle Database (10gR2,11gR2 & 12cR1) on SUSE Linux Enterprise Server 11 SP4

Arun Singh

Introduction

This document is to help you understand minor difference you may encounter while installing Oracle Database on SUSE Linux Enterprise Server. This document covers x86_64 version but installation steps are same for other platforms. We will use latest versions of Oracle Database 12cR1 (12.1.0.2), 11gR2 (11.2.0.4) and 10gR2 (10.2.0.5).

Oracle Software

Oracle Database version 12.1.0.2 is latest version and available for public download at: <http://www.oracle.com/technetwork/database/enterprise-edition/downloads/database12c-linux-download-2240591.html>

Oracle Database version 10.2.0.5 and 11.2.0.4 are available via Oracle Support web site (<http://support.oracle.com>). You need Oracle support account to get these software.

Installation

Install SUSE Linux Enterprise Server 11 SP4 with “**Oracle Server Base**” pattern. You can follow Oracle Installation manual for selective required rpms.

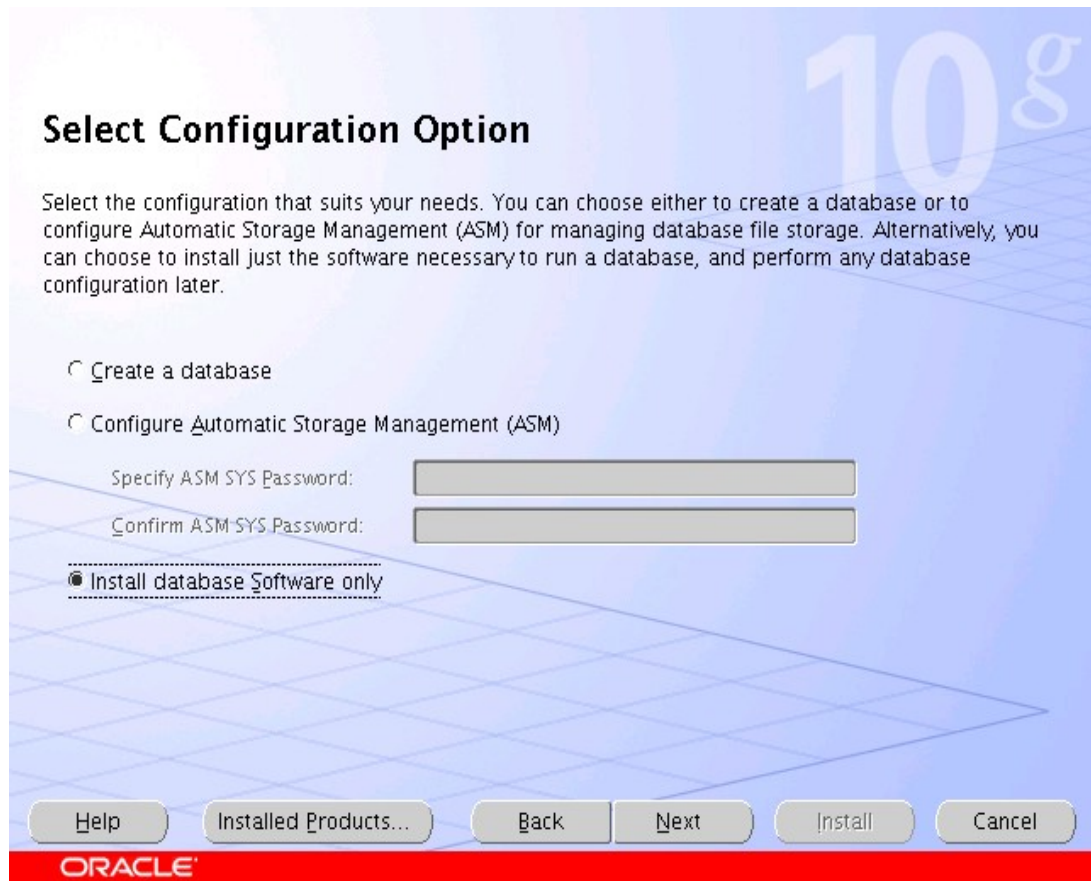
```
oracle@sles11sp4:~> uname -a
Linux sles11sp4 3.0.101-63-default #1 SMP Tue Jun 23 16:02:31 UTC 2015 (4b89d0c)
 x86_64 x86_64 x86_64 GNU/Linux
oracle@sles11sp4:~> cat /etc/SuSE-release
SUSE Linux Enterprise Server 11 (x86_64)
VERSION = 11
PATCHLEVEL = 4
oracle@sles11sp4:~> █
```

1. Installing Oracle Database 10.2.0.5

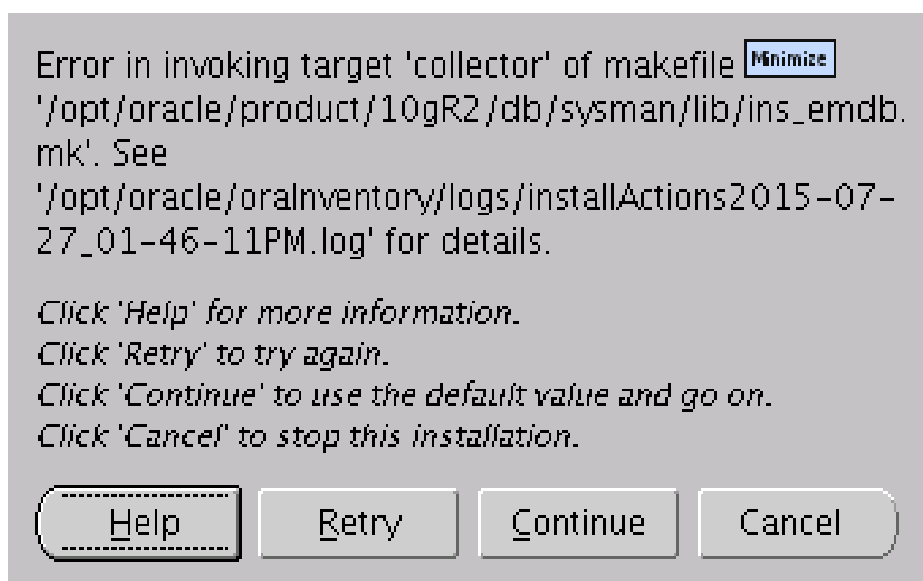
Please use Oracle Installation Guide for SLES11 SP1 for detailed instructions (http://ftp.suse.com/pub/partners/oracle/docs/10gR2_sles11_sp1_install.pdf).

In short, you can follow the steps outlines below:

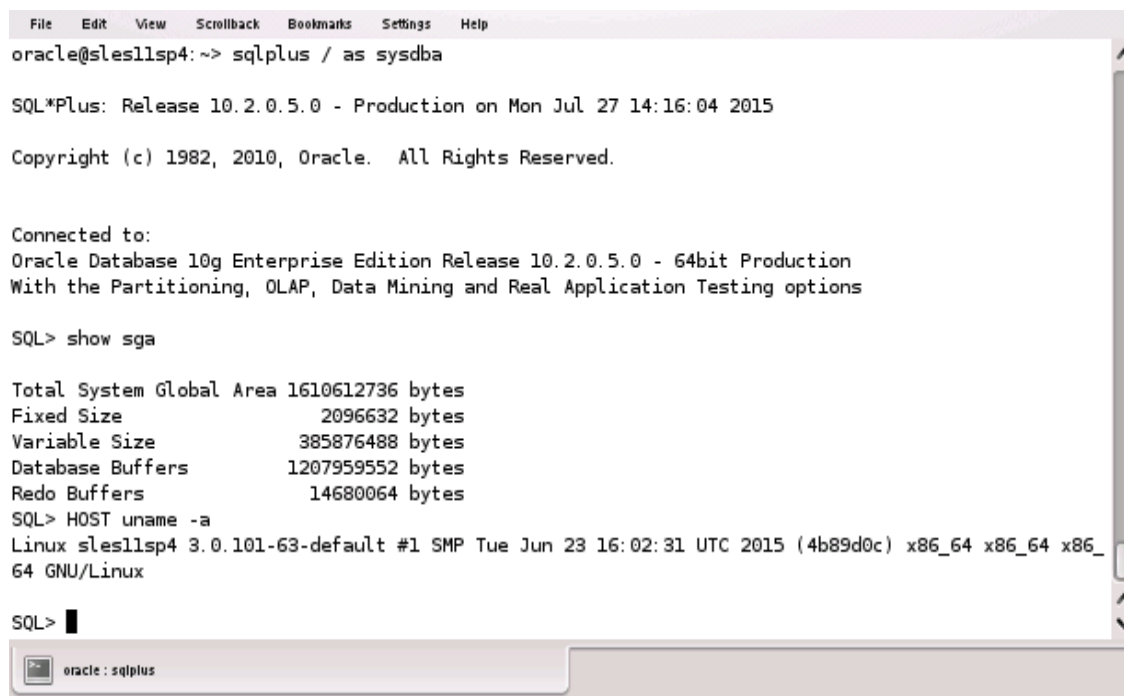
1. Get 10.2.0.1 (10201_database_linux_x86_64.cpio) & 10.2.0.5 (p8202632_10205_Linux-x86-64.zip) from Oracle Support.
2. Extract & Install Oracle Database 10.2.0.1 as a “**Database Software Only**” option



- a) Please use “**-ignoreSysPrereqs**” if SUSE Linux is not recognized by OUI. This happens only when OUI is older than current SLES version.
- b) Ignore following linking warning



3. Install Oracle Database 10.2.0.5 Patch
4. Configure Oracle Net Services (netca)
5. Create Oracle Database using Database Configuration Assistant(dbca)



```
File Edit View Scrollback Bookmarks Settings Help
oracle@sles11sp4:~> sqlplus / as sysdba

SQL*Plus: Release 10.2.0.5.0 - Production on Mon Jul 27 14:16:04 2015

Copyright (c) 1982, 2010, Oracle. All Rights Reserved.

Connected to:
Oracle Database 10g Enterprise Edition Release 10.2.0.5.0 - 64bit Production
With the Partitioning, OLAP, Data Mining and Real Application Testing options

SQL> show sga

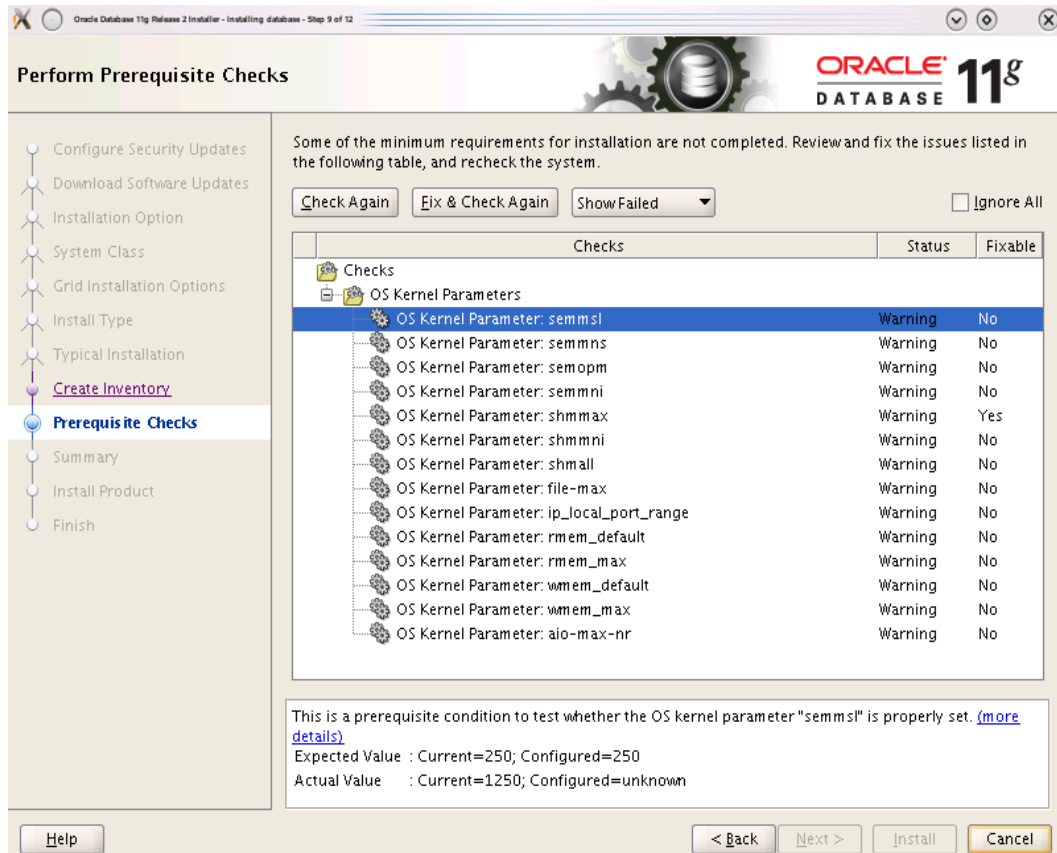
Total System Global Area 1610612736 bytes
Fixed Size                2096632 bytes
Variable Size             385876488 bytes
Database Buffers         1207959552 bytes
Redo Buffers              14680064 bytes
SQL> HOST uname -a
Linux sles11sp4 3.0.101-63-default #1 SMP Tue Jun 23 16:02:31 UTC 2015 (4b89d0c) x86_64 x86_64 x86_64 GNU/Linux

SQL>
```

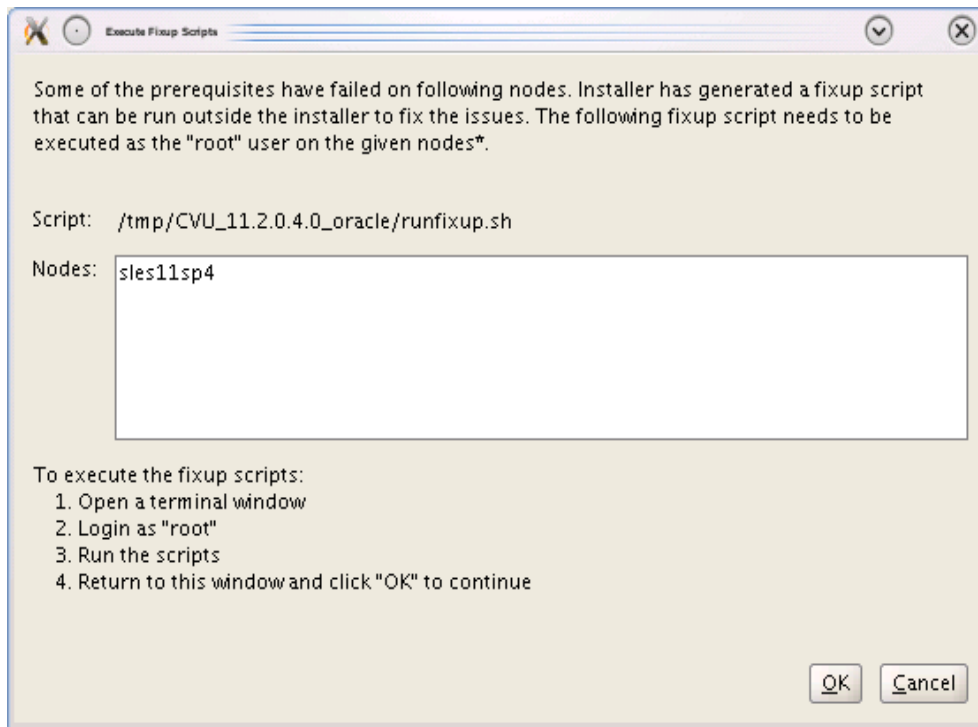
2. Installing Oracle Database 11.2.0.4

Please use Oracle 11gR2 Installation Guide for SLES11 SP1 (http://ftp.suse.com/pub/partners/oracle/docs/11gR2_sles11_sp1_install.pdf), to get familiar with installation process.

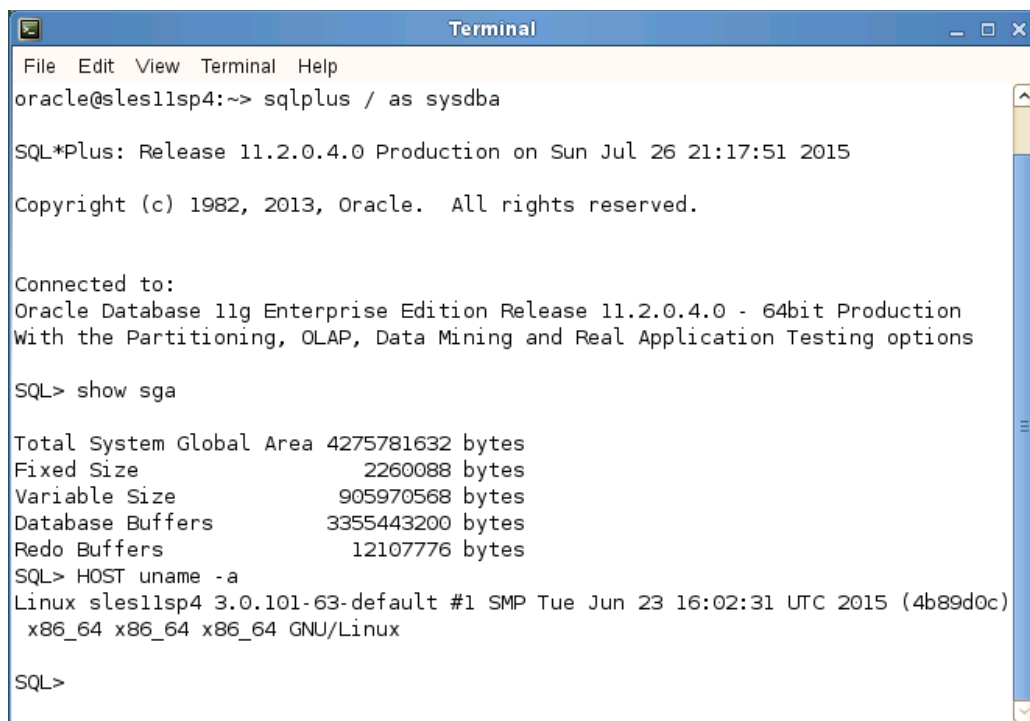
1. Download 11.2.0.4 SW (p13390677_112040_Linux-x86-64_1of7 & p13390677_112040_Linux-x86-64_2of7) & unzip locally.
2. Set CV_ASSUME_DISTID=SUSE11 in database/stage/cvu/cv/admin/cvu_config
3. Start Oracle Installer: database/runInstaller
4. Watch for following minor error/warning messages:



Select **Fix & Check Again** and run suggested script. This updates sysctl.conf file.



Select **OK** and continue installation.



```
Terminal
File Edit View Terminal Help
oracle@sles11sp4:~> sqlplus / as sysdba

SQL*Plus: Release 11.2.0.4.0 Production on Sun Jul 26 21:17:51 2015

Copyright (c) 1982, 2013, Oracle. All rights reserved.

Connected to:
Oracle Database 11g Enterprise Edition Release 11.2.0.4.0 - 64bit Production
With the Partitioning, OLAP, Data Mining and Real Application Testing options

SQL> show sga

Total System Global Area 4275781632 bytes
Fixed Size                2260088 bytes
Variable Size             905970568 bytes
Database Buffers         3355443200 bytes
Redo Buffers              12107776 bytes
SQL> HOST uname -a
Linux sles11sp4 3.0.101-63-default #1 SMP Tue Jun 23 16:02:31 UTC 2015 (4b89d0c)
x86_64 x86_64 x86_64 GNU/Linux

SQL>
```

3. Installing Oracle Database 12.1.0.2

Installing Oracle Database 12c is similar to 11.2.0.4 .

1. Download 12.1.0.2 SW (linuxamd64_12102_database_1of2 & linuxamd64_12102_database_2of2) & unzip locally.
2. Start Oracle Installer: database/runInstaller
3. Watch for following minor error/warning messages:

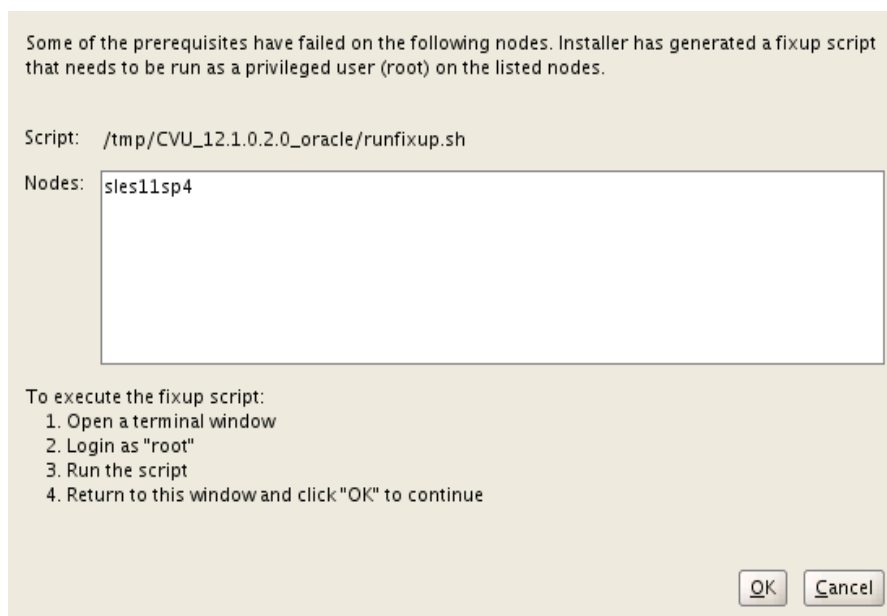
The screenshot shows the Oracle Database 12c Prerequisite Checks window. The left sidebar lists various installation options, with 'Prerequisite Checks' selected. The main area displays a 'Verification Result' section with a 'Fixup Result' tab. A message states: 'Some of the minimum requirements for installation are not completed. Review and fix the issues listed in the following table, and recheck the system.' Below this message are buttons for 'Check Again', 'Fix & Check Again', 'Show Failed', and 'Ignore All'. A table lists the checks:

Checks	Status	Fixable
OS Kernel Parameters		
OS Kernel Parameter: semmsl	Warning	Yes
OS Kernel Parameter: semmns	Warning	Yes
OS Kernel Parameter: semopm	Warning	Yes
OS Kernel Parameter: semmni	Warning	Yes

Below the table, a detailed message for the 'semmsl' parameter is shown: 'This is a prerequisite condition to test whether the OS kernel parameter "semmsl" is properly set. [\(more details\)](#)
Expected Value : 250
Actual Value : Current=1250; Configured=0'

At the bottom of the window, there are buttons for 'Help', '< Back', 'Next >', 'Install', and 'Cancel'.

Select **“Fix & Check Again”** and run suggested script. There is known issue with this script not updating kernel.sem. Please ensure “kernel.sem = 250 32000 100 128” is added in sysctl.conf correctly.



Select **OK** and continue installation.

```
Terminal
File Edit View Terminal Help
oracle@sles11sp4:~> sqlplus / as sysdba

SQL*Plus: Release 12.1.0.2.0 Production on Sun Jul 26 22:10:56 2015

Copyright (c) 1982, 2014, Oracle. All rights reserved.

Connected to:
Oracle Database 12c Enterprise Edition Release 12.1.0.2.0 - 64bit Production
With the Partitioning, OLAP, Advanced Analytics and Real Application Testing options

SQL> show sga

Total System Global Area 1.0100E+10 bytes
Fixed Size 4507656 bytes
Variable Size 1744832504 bytes
Database Buffers 8321499136 bytes
Redo Buffers 29044736 bytes

SQL> HOST uname -a
Linux sles11sp4 3.0.101-63-default #1 SMP Tue Jun 23 16:02:31 UTC 2015 (4b89d0c)
x86_64 x86_64 x86_64 GNU/Linux

SQL>
```

Thank you for selecting SUSE Linux as your platform of choice. Please post your question or comments to SUSE mailing list at suse-oracle@listx.novell.com.